

Everything You Need To Know About **Spring Loaded Mud Flap Brackets**

DEFINITION: A mud flap bracket assembly whose major components are a tube, spring and frame seat or mount, and an optional end cap.

The **tube** is the primary component that holds the mud flap and spring. All tubes have a mounting plate welded on one end.

The **spring** holds the tube to the frame seat or mount and allows the bracket to absorb vibrations and move out of the way on impact.

The **frame seat** (also known on some models as the end plate) is the component between the bracket tube and the truck frame and attaches to the truck frame. It also holds the tube and spring in place for mounting and removing.

There are three frame seat mounting designs: **Internal Frame Mount**, **Frame Seat with Internal Locator** and the **Self-Centering Frame Seat**.

The **Internal Frame Mount** does not have a true frame seat as it is recessed into the bracket tube mounting plate which can cause several problems.

- The bracket tube can "hang-up" and be out of position
- Does not protect the truck frame - direct tube contact causes wear on the frame
- The bracket spring **MUST** be held in place by a keeper bar for mounting and removing
- If the keeper bar is **NOT** in place when removing the bracket, the sudden release of the spring may cause serious personal injury
- Depending on the manufacturer, springs are loaded up to 800 lbs.

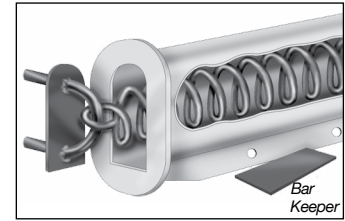
The **Frame Seat With Internal Locator**, is a true frame seat but with an internal locator.

- Protects the truck frame
- The bracket tube can "hang-up" and get out of position
- Keeps the bracket together which makes for easier and safer mounting and removal - no keeper bar to worry about

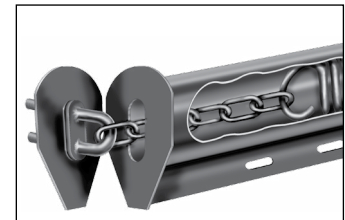
The third type of frame seat is the **Self-Centering Frame Seat**, a patented design that is a true frame seat with many special features.

- Will never "hang-up" - ALWAYS snaps into the correct position - 100% of the time.
- Protects the truck frame - no contact from the tube to the frame
- Keeps the bracket together which makes for easier and safer mounting and removal - no keeper bar to worry about

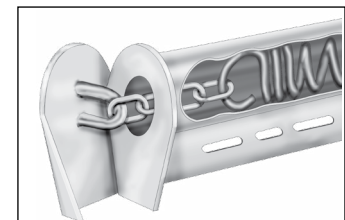
All **Fleet Engineers FB-27** brackets and **Hellcat** brackets have patented self-centering frame seats - the only brackets in the industry to do so. Quite often, manufacturers of the other two frame seat designs consider theirs to be self-centering but they do not perform correctly 100% of the time like the self-centering brackets. And most other brackets leave off the end cap, but not Fleet Engineers. An end cap provides a "finished" appearance, increases safety due to the built in reflectors and keeps debris outside the internal part of the tube. For these reasons, we believe it is important that all FB-27's* and Hellcats come standard with an attractive end cap that stays on!



**INTERNAL
FRAME MOUNT**



**FRAME SEAT WITH
INTERNAL LOCATOR**



**SELF-CENTERING
FRAME SEAT**

SPRING LOADED MUD FLAP BRACKETS

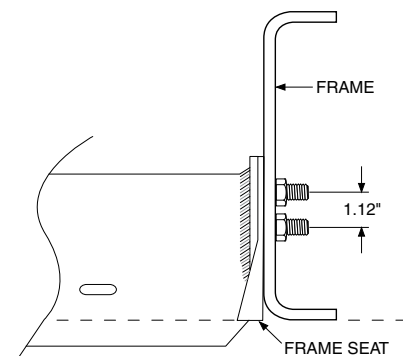
FB-27 Mounting Installation Instructions

1. Make sure the area of the frame where the bracket is to be mounted is clean and free from obstructions and protrusions. The frame seat of the bracket must come in full contact with the frame.
2. Locate the bracket in the desired position. Make sure the frame seat does not extend past the bottom edge of the frame. Mark the location of the bolts.
3. Drill 17/32" clearance holes for the bolts.

NOTE: Be sure to follow truck manufacturers recommended procedures for drilling any required holes in the frame.

4. Install bracket and torque nuts to a maximum of 57 ft. lbs.

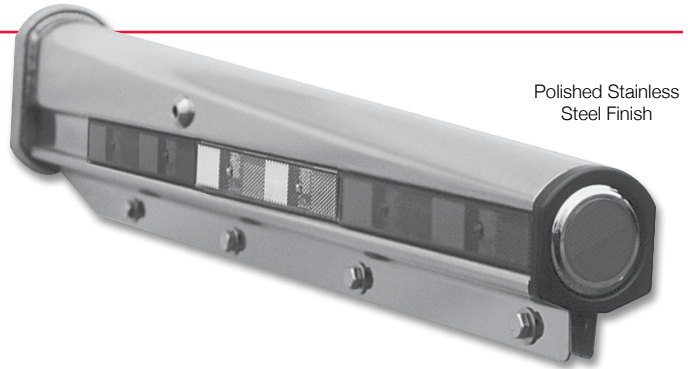
NOTE: Mounting the FB-27 with the frame seat extending past the bottom of the frame will void the warranty.



Hellcat Spring Loaded Flap Brackets

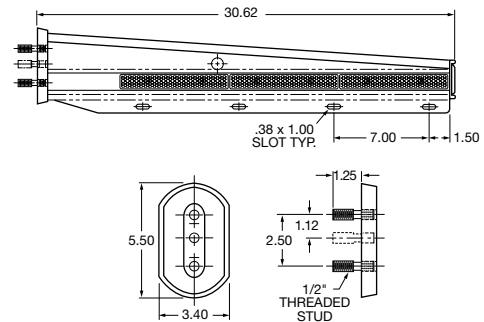
FEATURES

- Available in stainless steel or RoadKote painted finish
- Bracket is unassembled; for installation flexibility, reflectors and hardware are not attached
- Slot arrangement conforms to TTMA flap hole pattern
- Cast mounting seat accepts studs for either 1.125" or 2.5" hole pattern
- U.S. Patent # 6,604,724; CAN. Patent #2,328,677



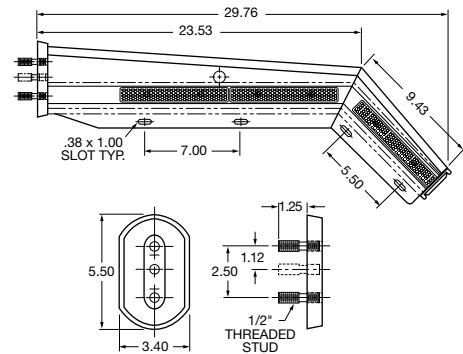
ORDER DETAILS

- Packaged set includes two brackets, reflectors, mounting hardware, end caps, plastic snap rivets, and plugs
- Hardware packaged set includes four studs, four nuts, four washers, and two gaskets



HELLCAT STRAIGHT SPRING LOADED BRACKETS SPECIFICATIONS

part no.	weight (lbs.)	description	finish	package	pkg qty
033-04992	24.26	straight bracket set	RoadKote	packaged set	1
033-04993	23.84	straight bracket set	stainless steel	packaged set	1
031-01503	0.70	hardware	zinc	packaged set	1



HELLCAT SHORTIE SPRING LOADED BRACKETS SPECIFICATIONS

part no.	weight (lbs.)	description	finish	package	pkg qty
033-05016	27.20	shortie bracket set	RoadKote	packaged set	1
033-05017	27.85	shortie bracket set	stainless steel	packaged set	1
031-01503	0.70	hardware	zinc	packaged set	1

NOTE: Full contact must be maintained between frame seat and truck frame rail. See page 51.

FB-27 Spring Loaded Brackets with Reflective Tape on Extended Flange

APPLICATION

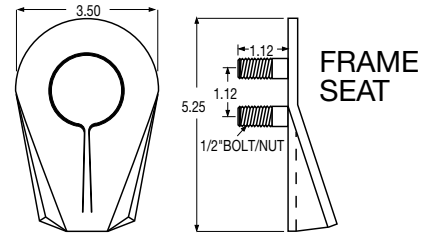
- When mounted directly to the truck frame use the 30.25" Frame Mount bracket. If possibility of bracket extending past the outside edge of the tire when using a frame mounting adapter, order the Standard 28.00" or smaller FB-27 Bracket.

FEATURES

- Extended flange to accommodate reflective tape
- DOT-C2 reflective tape adhered to extended flange
- Bracket available in RoadKote finish or polished stainless steel
- Patented seat design eliminates wind-caused bracket rotation
- Reduces flap and bracket damage
- Ideal for the heavy-duty spray suppression flaps

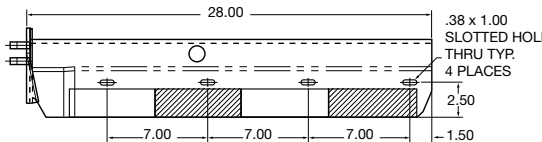
ORDER DETAILS

- Packaged set part number represents two brackets, mounting hardware, and end caps



STANDARD FB-27 SPRING LOADED BRACKETS WITH REFLECTIVE TAPE ON EXTENDED FLANGE

- Slot arrangement conforms to TTMA flap hole pattern

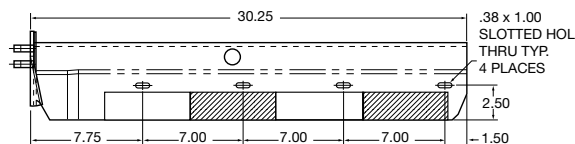


SPECIFICATIONS

part no.	weight (lbs.)	length (in.)	description	construction	package	pkg qty	cross reference
033-04555	21.70	28.00	extended flange with tape	RoadKote	packaged set	1	B572825WTBK, BF28PCX-kit
033-04567	20.77	28.00	extended flange with tape	stainless steel	packaged set	1	B572825WTSK, BF28SSCX-kit

FRAME MOUNT FB-27 SPRING LOADED BRACKETS WITH REFLECTIVE TAPE ON EXTENDED FLANGE

- Slot arrangement conforms to TTMA flap hole pattern
- Larger size for flap retention to tire's outer edge



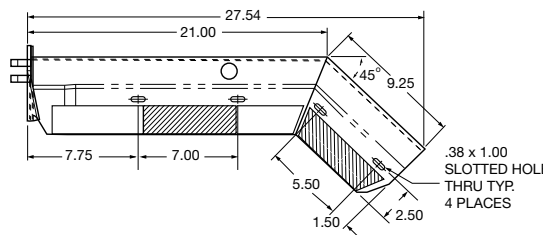
SPECIFICATIONS

part no.	weight (lbs.)	length (in.)	description	construction	package	pkg qty	cross reference
033-04530	22.85	30.25	extended flange with tape	RoadKote	packaged set	1	B573025WTBK, BF30PCX-kit
033-04550	22.89	30.25	extended flange with tape	stainless steel	packaged set	1	B573025WTSK, BF30SSCX-kit

NOTE: Full contact must be maintained between frame seat and truck frame rail. See page 51.

SPRING LOADED MUD FLAP BRACKETS

SHORTIE FB-27 SPRING LOADED BRACKETS WITH REFLECTIVE TAPE ON EXTENDED FLANGE



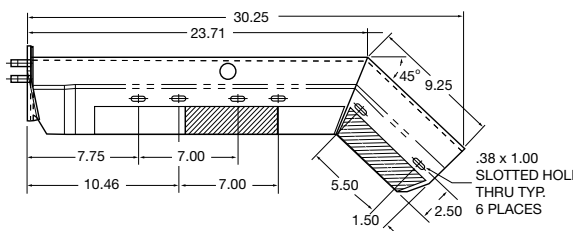
SPECIFICATIONS

part no.	weight (lbs.)	length (in.)	description	construction	package	pkg qty	cross reference
033-04542	22.45	27.54	extended flange with tape	RoadKote	packaged set	1	B6728, SF3045PCX-kit
033-04546	21.62	27.54	extended flange with tape	stainless steel	packaged set	1	B6728S, SF3045SSCX-kit

SPRING LOADED MUD FLAP BRACKETS

FRAME MOUNT SHORTIE FB-27 SPRING LOADED BRACKETS WITH REFLECTIVE TAPE ON EXTENDED FLANGE

- Longer length provides complete mud flap containment



SPECIFICATIONS

part no.	weight (lbs.)	length (in.)	description	construction	package	pkg qty	cross reference
033-04647	22.95	30.25	extended flange with tape	RoadKote	packaged set	1	B67
033-04648	21.60	30.25	extended flange with tape	stainless steel	packaged set	1	B67S

NOTE: Full contact must be maintained between frame seat and truck frame rail. See page 51.

Aftermarket FB-27 Spring Loaded Brackets with Reflective Tape on Extended Flange

APPLICATION

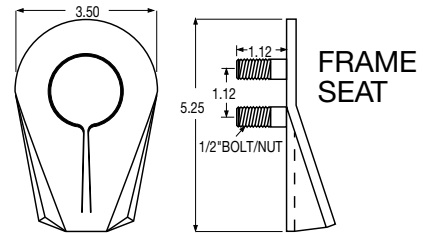
- When mounted directly to the truck frame use the 30.25" Frame Mount bracket. If possibility of bracket extending past the outside edge of the tire when using a frame mounting adapter, order the Standard 28.00" or smaller FB-27 Bracket.

FEATURES

- DOT-C2 reflective tape adhered to flange
- Bracket available in RoadKote finish or polished stainless steel
- Patented seat design eliminates wind-caused bracket rotation
- Reduces flap and bracket damage
- Ideal for the heavy-duty spray suppression flaps

ORDER DETAILS

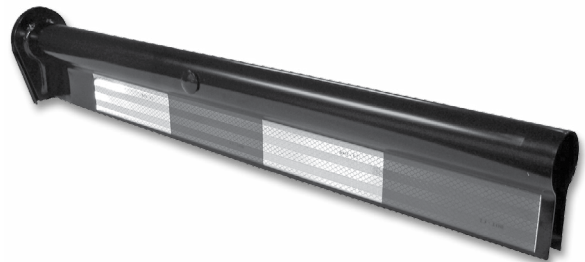
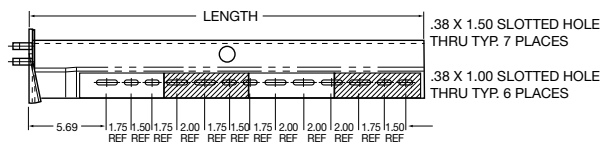
- Packaged set part number represents two brackets, mounting hardware, and end caps



Lower priced conspicuity brackets

AFTERMARKET STANDARD FB-27 SPRING LOADED BRACKETS WITH REFLECTIVE TAPE ON EXTENDED FLANGE

- Slot arrangement conforms to TTMA flap hole pattern

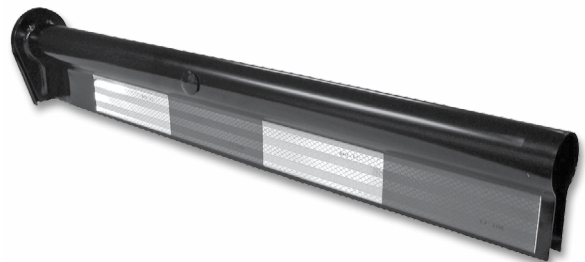
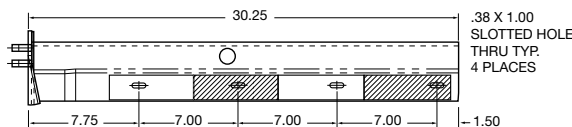


SPECIFICATIONS

part no.	weight (lbs.)	length (in.)	description	construction	package	pkg qty	cross reference
033-05190	18.03	28.00	extended flange with tape	RoadKote	packaged set	1	B572825WTBK, BF28PCX-kit
033-05191	18.35	28.00	extended flange with tape	stainless steel	packaged set	1	B572825WTSK, BF28SSCX-kit

AFTERMARKET FRAME MOUNT FB-27 SPRING LOADED BRACKETS WITH REFLECTIVE TAPE ON EXTENDED FLANGE

- Slot arrangement conforms to TTMA flap hole pattern
- Larger size for flap retention to tire's outer edge



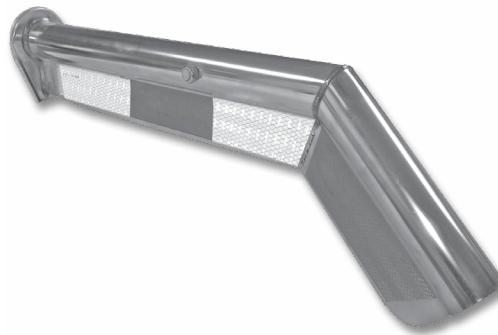
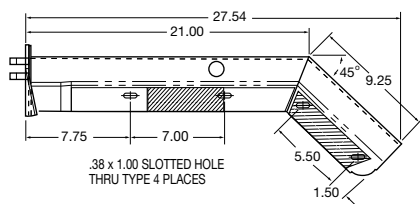
SPECIFICATIONS

part no.	weight (lbs.)	length (in.)	description	construction	package	pkg qty	cross reference
033-05192	19.31	30.25	extended flange with tape	RoadKote	packaged set	1	B573025WTBK, BF30PCX-kit
033-05193	18.85	30.25	extended flange with tape	stainless steel	packaged set	1	B57S, BF30SSCX-kit

NOTE: Full contact must be maintained between frame seat and truck frame rail. See page 51.

SPRING LOADED MUD FLAP BRACKETS

AFTERMARKET SHORTIE FB-27 SPRING LOADED BRACKETS WITH REFLECTIVE TAPE ON EXTENDED FLANGE



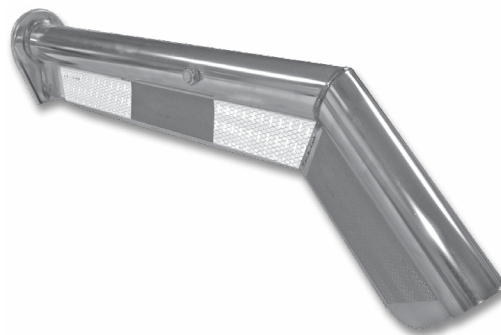
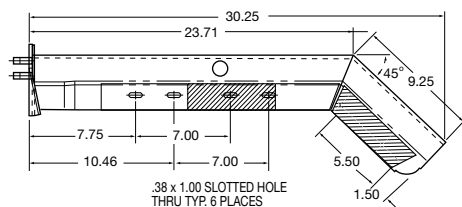
SPECIFICATIONS

part no.	weight (lbs.)	length (in.)	description	construction	package	pkg qty	cross reference
033-05194	18.85	27.54	extended flange with tape	RoadKote	packaged set	1	B6728, SF3045PCX-kit
033-05195	18.35	27.54	extended flange with tape	stainless steel	packaged set	1	B6728S, SF3045SSCX-kit

SPRING LOADED MUD FLAP BRACKETS

AFTERMARKET FRAME MOUNT SHORTIE FB-27 SPRING LOADED BRACKETS WITH REFLECTIVE TAPE ON EXTENDED FLANGE

- Longer length provides complete mud flap containment



SPECIFICATIONS

part no.	weight (lbs.)	length (in.)	description	construction	package	pkg qty	cross reference
033-05196	20.65	30.25	extended flange with tape	RoadKote	packaged set	1	B67
033-05197	19.71	30.25	extended flange with tape	stainless steel	packaged set	1	B67S

NOTE: Full contact must be maintained between frame seat and truck frame rail. See page 51.

FB-27 Brackets with Reflector Holders and Reflectors

APPLICATION

- When mounted directly to the truck frame use the 30.25" Frame Mount bracket. If possibility of bracket extending past the outside edge of the tire when using a frame mounting adapter, order the Standard 28.00" or smaller FB-27 Bracket.

FEATURES

- Holders made of strong black plastic construction and have tabs to hold reflectors in securely in place
- Brackets available in RoadKote or stainless steel finish and two lengths

ORDER DETAILS

- Packaged set includes two brackets, end caps, two holders, two white reflectors, four red reflectors, and all hardware (bracket to chassis, holder to bracket and holder to bracket to mud flap)



SPECIFICATIONS FOR STRAIGHT BRACKETS

part no.	weight (lbs.)	bracket length	bracket construction	package	pkg qty
031-01265	21.20	30.25	RoadKote	packaged set	1
031-01266	20.54	30.25	stainless steel	packaged set	1
031-01271	19.64	28.00	RoadKote	packaged set	1
031-01272	20.00	28.00	stainless steel	packaged set	1

SPECIFICATIONS FOR SHORTIE BRACKETS

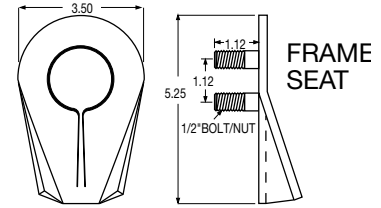
part no.	weight (lbs.)	bracket length	bracket construction	package	pkg qty
031-01273	20.36	27.54	RoadKote	packaged set	1
031-01274	20.00	27.54	stainless steel	packaged set	1
031-01267	21.58	30.25	RoadKote	packaged set	1
031-01268	21.90	30.25	stainless steel	packaged set	1

SPRING LOADED MUD FLAP BRACKETS

FB-27 Spring Loaded Brackets

APPLICATION

- When mounted directly to the truck frame use the 30.25" Frame Mount bracket. If possibility of bracket extending past the outside edge of the tire when using a frame mounting adapter, order the Standard 28.00" or smaller FB-27 Bracket.



FEATURES

- Patented seat design eliminates wind-caused bracket rotation
- Reduces flap and bracket damage
- Ideal for the heavy-duty spray suppression flaps
- Slot arrangement conforms to TTMA flap hole pattern for straight brackets
- Frame Mount Straight and Shortie are longer for flap retention to tires outer edge

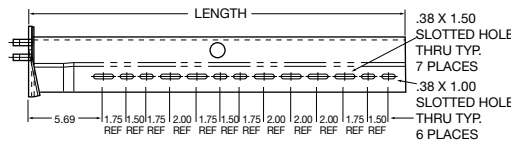
Note: The FB-27 Spring Loaded Brackets on pages 58 and 59 do not contain conspicuity tape which is required to meet conspicuity requirements in North America. For parts that have conspicuity tape already attached see pages 53-56. To conform to conspicuity requirements using reflector holders or plate, see pages 57, 82-84.

ORDER DETAILS

- Packaged set part number represents two brackets, mounting hardware, and end caps (033-00257 does not have end caps)

SPRING LOADED MUD FLAP BRACKETS

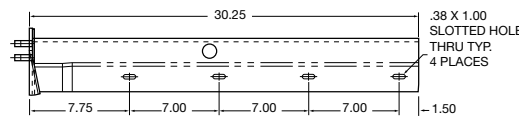
STANDARD FB-27 SPRING LOADED BRACKETS



SPECIFICATIONS

part no.	weight (lbs.)	length (in.)	construction	may be replaced by part no.*	package	pkg qty	cross reference
033-00270	18.25	28.00	RoadKote	033-00868	packaged set	1	#BF-28P-Kit
033-00272	17.26	24.50	RoadKote	n/a	packaged set	1	-
033-00277	17.70	28.00	stainless steel	033-00870	packaged set	1	#BF-28SS-Kit

FRAME MOUNT FB-27 SPRING LOADED BRACKETS

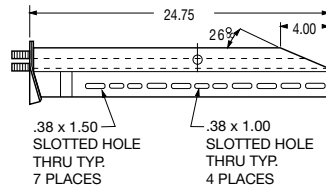


SPECIFICATIONS

part no.	weight (lbs.)	length (in.)	construction	package	pkg qty	cross reference
033-00868	19.31	30.25	RoadKote	packaged set	1	#B773025NTBK, # B573025NTBK, #BF30P-Kit
033-00870	18.85	30.25	stainless steel	packaged set	1	#BF30SS-Kit

NOTE: Full contact must be maintained between frame seat and truck frame rail. See page 51.

**26° CUT FB-27
SPRING LOADED
BRACKET**

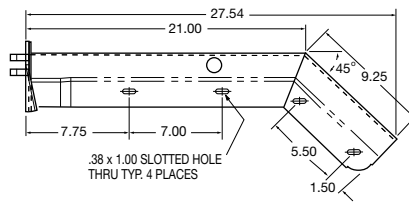


- Does not have end caps

SPECIFICATIONS

part no.	weight (lbs.)	length (in.)	construction	package	pkg qty
033-00257	16.73	24.75	RoadKote	packaged set	1

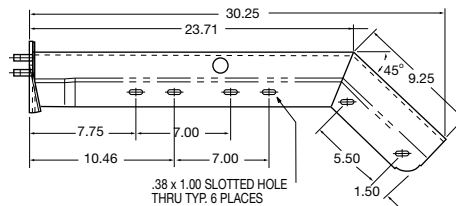
**SHORTIE FB-27
SPRING LOADED
BRACKETS**



SPECIFICATIONS

part no.	weight (lbs.)	length (in.)	construction	package	pkg qty	cross reference
033-00864	18.75	27.54	RoadKote	packaged set	1	#SF3045P-Kit
033-00865	18.35	27.54	stainless steel	packaged set	1	#SF3045SS-Kit

**FRAME MOUNT
SHORTIE FB-27
SPRING LOADED
BRACKETS**



SPECIFICATIONS

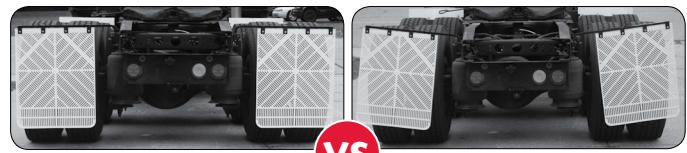
part no.	weight (lbs.)	length (in.)	construction	package	pkg qty	cross reference
033-03404	20.65	30.25	RoadKote	packaged set	1	# B673025NTBK, #B67NT, #SF3345P-Kit
033-04150	19.71	30.25	stainless steel	packaged set	1	#SF3345SS-Kit

SPRING LOADED MUD FLAP BRACKETS

Bar Type Mud Flap Brackets

APPLICATION

- Our spring steel bar brackets provide superior strength and spring back performance. Unlike many competitive models, our flap brackets maintain a true 90° angle in all road conditions. Fleet Engineers' bar bracket line and supporting mounting options is unmatched.



Fleet Engineers

VS

The Competition

FEATURES

- Square spring steel
- Black primer finish

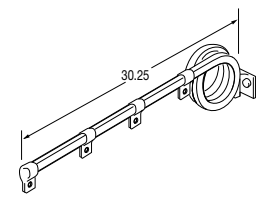
ORDER DETAILS

- Contact our sales department regarding any application questions
- Packaged sets include two arms, standard regular or standard end cast mounting sockets, and all mounting hardware (bracket to chassis and mud flap to bracket)

SQUARE TRIPLE COIL BRACKET

SPECIFICATIONS

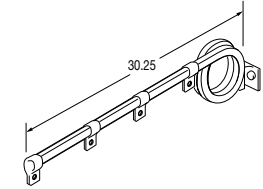
part no.	weight (lbs.)	description	size (in.)	mounts	application	package	pkg qty	cross reference
031-00123	19.10	pair	.63	standard	standard-duty	packaged set	1	-
031-00143	19.20	pair	.63	end	standard-duty	packaged set	1	-
034-00429	7.75	roadside	.63	-	standard-duty	single	1	A23L
034-00430	7.75	curbside	.63	-	standard-duty	single	1	A23R
031-00101	26.10	pair	.75	standard	heavy-duty	packaged set	1	-
031-00111	26.32	pair	.75	end	heavy-duty	packaged set	1	-
034-00676	11.27	roadside	.75	-	heavy-duty	single	1	-
034-00677	11.27	curbside	.75	-	heavy-duty	single	1	-



SQUARE DOUBLE COIL BRACKET

SPECIFICATIONS

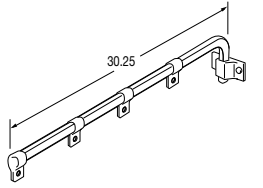
part no.	weight (lbs.)	description	size (in.)	mounts	application	package	pkg qty	cross reference
031-00130	17.00	pair	.63	standard	standard-duty	packaged set	1	-
034-00628	6.80	roadside	.63	-	standard-duty	single	1	-
034-00629	6.80	curbside	.63	-	standard-duty	single	1	-
031-00108	22.90	pair	.75	standard	heavy-duty	packaged set	1	B83
034-00636	9.60	roadside	.75	-	heavy-duty	single	1	A83L
034-00637	9.60	curbside	.75	-	heavy-duty	single	1	A83R



RIGHT ANGLE BRACKET

SPECIFICATIONS

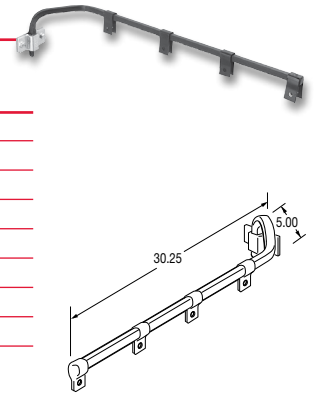
part no.	weight (lbs.)	size (in.)	mounts	application	package	pkg qty	cross reference
031-00125	11.95	.63	standard	standard-duty	packaged set	1	B25
031-00145	12.44	.63	end	standard-duty	packaged set	1	-
034-00426	4.40	.63	-	standard-duty	single	1	A25
031-00102	16.10	.75	standard	heavy-duty	packaged set	1	B82
031-00112	16.38	.75	end	heavy-duty	packaged set	1	-
034-00679	6.30	.75	-	heavy-duty	single	1	A82



BAR TYPE MUD FLAP BRACKETS

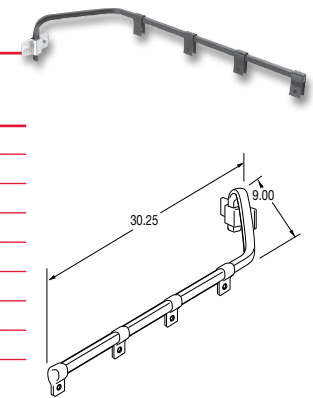
5.00" OFFSET BRACKET SPECIFICATIONS

part no.	weight (lbs.)	description	size (in.)	mounts	application	package	pkg qty	cross reference
031-00129	13.20	pair	.63	standard	standard-duty	packaged set	1	B29
031-00149	12.36	pair	.63	end	standard-duty	packaged set	1	-
034-00427	4.90	roadside	.63	-	standard-duty	single	1	A29L
034-00428	4.90	curbside	.63	-	standard-duty	single	1	A29R
031-00103	17.00	pair	.75	standard	heavy-duty	packaged set	1	-
031-00113	17.16	pair	.75	end	heavy-duty	packaged set	1	-
034-00682	6.60	roadside	.75	-	heavy-duty	single	1	-
034-00683	6.60	curbside	.75	-	heavy-duty	single	1	-



9.00" OFFSET BRACKET SPECIFICATIONS

part no.	weight (lbs.)	description	size (in.)	mounts	application	package	pkg qty	cross reference
031-00147	13.70	pair	.63	standard	standard-duty	packaged set	1	B69
031-00157	14.54	pair	.63	end	standard-duty	packaged set	1	-
034-00642	5.00	roadside	.63	-	standard-duty	single	1	A69L
034-00643	5.00	curbside	.63	-	standard-duty	single	1	A69R
031-00089	18.60	pair	.75	standard	heavy-duty	packaged set	1	-
031-00099	18.66	pair	.75	end	heavy-duty	packaged set	1	-
034-00644	7.50	roadside	.75	-	heavy-duty	single	1	-
034-00645	7.00	curbside	.75	-	heavy-duty	single	1	-



BAR TYPE MUD FLAP BRACKETS

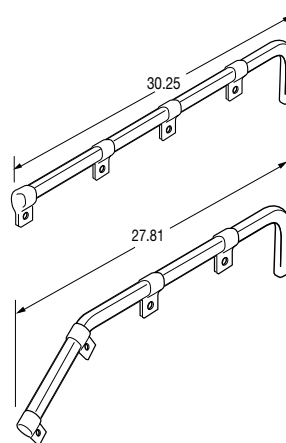
Standard or Shortie Point-of-Purchase Barrel

FEATURES

- Standard barrel includes 50, right angle, .63" mud flap bracket arms
- Shortie barrel includes 40, Shortie right angle, .63" mud flap bracket arms
- Arms available separately

ORDER DETAILS

- Contact our sales department regarding any application questions



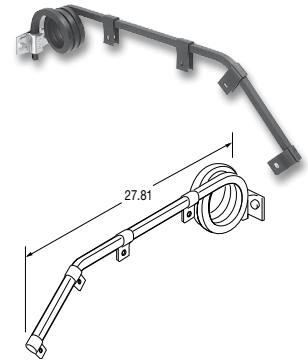
SPECIFICATIONS

part no.	weight (lbs.)	description	package	pkg qty
031-00050	228.00	Straight P.O.P. Barrel and bracket arms	packaged set	50
034-00426	4.40	Straight .63" right angle bracket arm	single	1
031-00049	184.50	Shortie P.O.P. Barrel and bracket arms	packaged set	40
034-00433	4.42	Shortie .63" Shortie right angle bracket arm	single	1

Shortie Bar Type Mud Flap Brackets

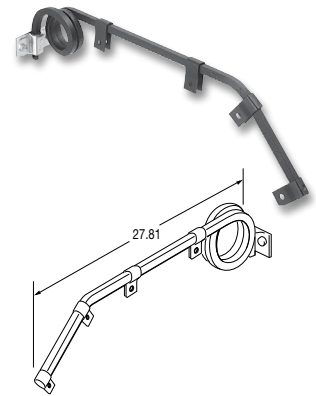
SHORTIE SQUARE TRIPLE COIL RACKET SPECIFICATIONS

part no.	weight (lbs.)	description	bar size (in.)	mounts	application	package	pkg qty	cross reference
031-00133	19.70	pair	.63	standard	standard-duty	packaged set	1	B33
031-00153	19.75	pair	.63	end	standard-duty	packaged set	1	-
034-00436	7.66	roadside	.63	-	standard-duty	single	1	A33L
034-00437	7.66	curbside	.63	-	standard-duty	single	1	A33R
031-00104	26.30	pair	.75	standard	heavy-duty	packaged set	1	-
031-00114	26.25	pair	.75	end	heavy-duty	packaged set	1	-
034-00672	11.20	roadside	.75	-	heavy-duty	single	1	-
034-00673	11.20	curbside	.75	-	heavy-duty	single	1	-



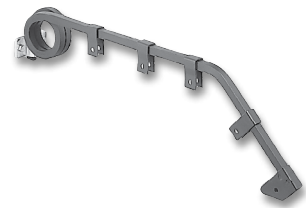
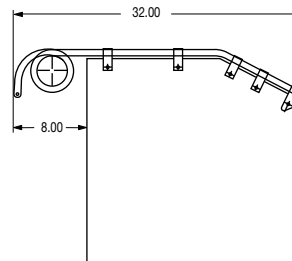
SHORTIE SQUARE DOUBLE COIL RACKET SPECIFICATIONS

part no.	weight (lbs.)	description	bar size (in.)	mounts	application	package	pkg qty	cross reference
031-00136	17.20	pair	.63	standard	standard-duty	packaged set	1	-
031-00146	18.20	pair	.63	end	standard-duty	packaged set	1	-
034-00660	6.70	roadside	.63	-	standard-duty	single	1	-
034-00661	6.70	curbside	.63	-	standard-duty	single	1	-
031-00110	23.00	pair	.75	standard	heavy-duty	packaged set	1	84
031-00120	23.10	pair	.75	end	heavy-duty	packaged set	1	-
034-00668	9.50	roadside	.75	-	heavy-duty	single	1	A84L
034-00669	9.50	curbside	.75	-	heavy-duty	single	1	A84R



SHORTIE SQUARE DOUBLE COIL BRACKET (EXTRA-LONG)

- .75" bar size
- Longer length provides complete mud flap containment
- Special end bracket clip to reduce flap breakage



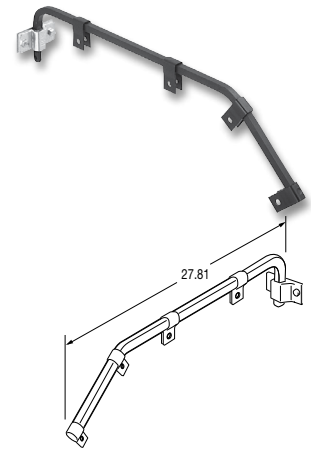
SPECIFICATIONS

part no.	weight (lbs.)	description	bar size (in.)	mounts	application	package	pkg qty	cross reference
031-00553	25.55	pair	.75	standard	heavy-duty	packaged set	1	B87
034-00877	10.80	roadside	.75	standard	heavy-duty	single	1	A87L
034-00878	10.80	curbside	.75	standard	heavy-duty	single	1	A87R

BAR TYPE MUD FLAP BRACKETS

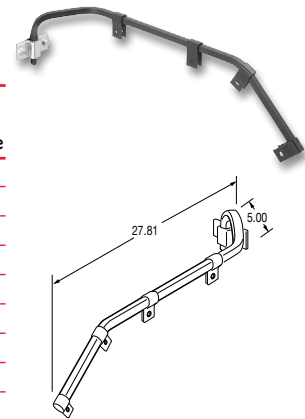
SHORTIE RIGHT ANGLE BRACKET SPECIFICATIONS

part no.	weight (lbs.)	bar size (in.)	mounts	application	package	pkg qty	cross reference
031-00135	12.80	.63	standard	standard-duty	packaged set	1	B35
031-00155	13.20	.63	end	standard-duty	packaged set	1	-
034-00433	4.42	.63	-	standard-duty	single	1	A35
031-00105	16.62	.75	standard	heavy-duty	packaged set	1	B81
031-00115	17.48	.75	end	heavy-duty	packaged set	1	-
034-00685	6.30	.75	-	heavy-duty	single	1	A81



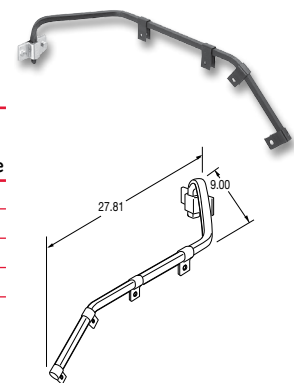
SHORTIE 5.00" OFFSET BRACKET SPECIFICATIONS

part no.	weight (lbs.)	description	bar size (in.)	mounts	application	package	pkg qty	cross reference
031-00139	13.50	pair	.63	standard	standard-duty	packaged set	1	B39
031-00159	13.00	pair	.63	end	standard-duty	packaged set	1	-
034-00434	4.90	roadside	.63	-	standard-duty	single	1	A39L
034-00435	4.90	curbside	.63	-	standard-duty	single	1	A39R
031-00106	17.21	pair	.75	standard	heavy-duty	packaged set	1	-
031-00116	18.30	pair	.75	end	heavy-duty	packaged set	1	-
034-00688	6.60	roadside	.75	-	heavy-duty	single	1	-
034-00689	6.60	curbside	.75	-	heavy-duty	single	1	-



SHORTIE 9.00" OFFSET BRACKET SPECIFICATIONS

part no.	weight (lbs.)	description	bar size (in.)	mounts	application	package	pkg qty	cross reference
031-00150	13.80	pair	.63	standard	standard-duty	packaged set	1	B79
031-00160	15.40	pair	.63	end	standard-duty	packaged set	1	-
034-00650	5.00	roadside	.63	-	standard-duty	single	1	A79L
034-00651	5.00	curbside	.63	-	standard-duty	single	1	A79R



BAR TYPE MUD FLAP BRACKETS

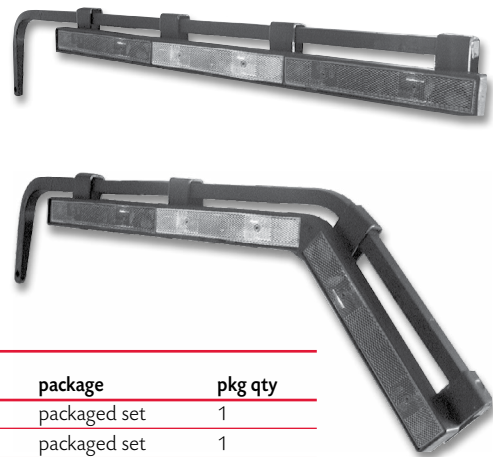
Bar Type Brackets with Reflector Holders and Reflectors

FEATURES

- Holders made of strong black plastic construction and have tabs to hold reflectors securely in place

ORDER DETAILS

- Packaged set includes two arms, cast sockets, two holders, two white reflectors, four red reflectors, and all hardware (bracket to chassis, holder to bracket and holder to bracket to mud flap)



SPECIFICATIONS

part no.	weight (lbs.)	description	application	package	pkg qty
031-01263	13.70	right angle	standard duty	packaged set	1
031-01264	13.85	shortie right angle	standard duty	packaged set	1
031-01311	13.85	shortie right angle	heavy duty	packaged set	1
031-01312	13.85	right angle	heavy duty	packaged set	1
031-01313	13.85	universal right angle	heavy duty	single	1
031-01314	13.85	roadside shortie right angle	heavy duty	single	1
031-01315	13.85	universal right angle	standard duty	single	1
031-01316	13.85	roadside shortie right angle	standard duty	single	1
031-01317	13.85	curbside shortie right angle	standard duty	single	1
031-01318	13.85	curbside shortie right angle	heavy duty	single	1